

DNP	BG	USA	ISO	CH2	CH3	øE	L1	L2	L3	F	COD. (F)	COD. (M)
10	2	06	10	22	22	34	98	64	49	G 1/4	PVV3.1006.112	PVV3.1006.113
										1/4 NPT	PVV3.1006.012	PVV3.1006.013
										G 3/8	PVV3.1010.112	PVV3.1010.113
										3/8 NPT	PVV3.1010.012	PVV3.1010.013
										M 16x1.5	PVV3.1016.102	PVV3.1016.103
M 18x1.5	PVV3.1018.102	PVV3.1018.103										
13	3	08	12.5	30	30	42	103	67	53	G 3/8	PVV3.1310.112	PVV3.1310.113
										3/8 NPT	PVV3.1310.012	PVV3.1310.013
										G 1/2	PVV3.1313.112	PVV3.1313.113
										1/2 NPT	PVV3.1313.012	PVV3.1313.013
										M 14x1.5	PVV3.1314.102	PVV3.1314.103
										M 16x1.5	PVV3.1316.102	PVV3.1316.103
										M 18x1.5	PVV3.1318.102	PVV3.1318.103
M 22x1.5	PVV3.1322.102	PVV3.1322.103										
20	4	12	20	36	36	47.5	129	84	66	G 1/2	PVV3.2013.112	PVV3.2013.113
										1/2 NPT	PVV3.2013.012	PVV3.2013.013
										G 3/4	PVV3.2019.112	PVV3.2019.113
										3/4 NPT	PVV3.2019.012	PVV3.2019.013
										M 18x1.5	PVV3.2018.102	PVV3.2018.103
										M 22x1.5	PVV3.2022.102	PVV3.2022.103
M 26x1.5	PVV3.2026.102	PVV3.2026.103										
25	5	16	25	41	41	E 55	152	100	78	G 3/4	PVV3.2519.112	PVV3.2519.113 E
										Ø 55		PVV3.2519.113 T
										E 55		PVV3.2519.013 E
										Ø 55		PVV3.2519.013 T
										E 55		PVV3.2525.113 E
										Ø 55		PVV3.2525.113 T
										E 55		PVV3.2525.013 E
										Ø 55		PVV3.2525.013 T
										E 55		PVV3.2530.103 E
										Ø 55		PVV3.2530.103 T

**CARATTERISTICHE TECNICHE**  
**Materiali:** acciaio al carbonio e acciai speciali zincati e passivati gialli. **Guarnizioni:** in gomma nitrilica NBR. Altre qualità a richiesta. **Temperatura di esercizio:** con guarnizioni standard - 25°C + 125°C. **Antiestrusori:** in Teflon puro. **Filettature:** metriche - G(BSP) o NPT secondo la norma DIN 3852 forma Y. Altre filettature a richiesta.

**TECHNICAL INFORMATION**  
**Materials:** carbon and special steel zinc-plated and yellow bichromated. **Seals:** standard in nitrile NBR. Other seals on request. **Working temperatures:** with NBR standard seals - 25°C + 125°C. **Back-up ring:** in pure Teflon. **Threads:** metric - G(BSP) or NPT according to DIN 3852 form Y. Other threads on request.

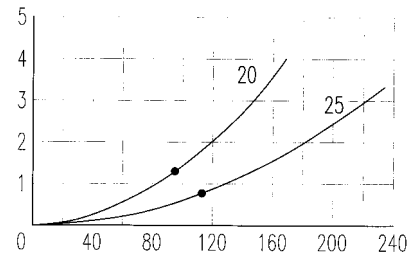
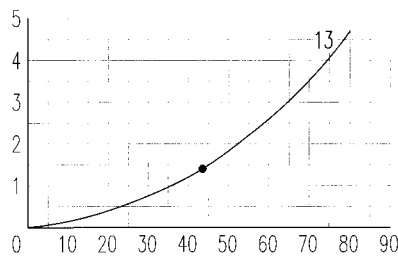
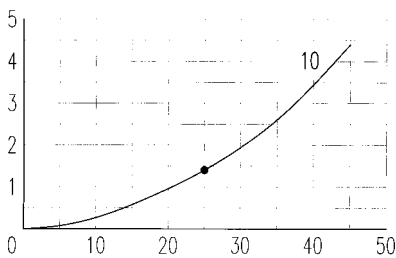
**TECHNISCHE MERKMALE**  
**Werkstoff:** Kohlenstoff- und Sonderstahl, verzinkt und gelb chromatiert. **Dichtungen:** aus Nitril NBR lieferbar. Andere Dichtungen auf Anfrage ebenfalls lieferbar. **Betriebstemperatur:** mit NBR Standard-Dichtung - 25°C + 125°C. **Stuetzring:** aus rein Teflon. **Gewinde:** metrische - G(BSP) oder NPT nach DIN 3852 Form Y. Andere Gewinde auf Wunsch ebenfalls lieferbar.

**CARACTERISTIQUES TECHNIQUES**  
**Matériel:** acier au carbone et aciers spéciaux zingués et bichromatés jaunes. **Joints:** nitrile NBR en standard. Autres qualités sur demande. **Température de service:** avec joints standard - 25°C + 125°C. **Bague anti-extrusion:** en Teflon pur. **Taroudage:** métriques - G(BSP) ou NPT selon DIN 3852 forme Y. Autres taroudages sur demande.

Dimensione nominale Nominal size Nennmass Dimension nominale				Press. max d'esercizio Max working pressure Max Betriebsdruck Press. de service max		Portata nominale Rated flow Durchfluss Débit	Pressione min di scoppio / Min burst pressure Min Berstdruck / Pression d'éclatement min			Spillaggio / Fluid spillage Überflut / Ecoulement
DNP	BG	USA	ISO	DN (mm)	(bar)	(l/m)	Maschio / Male Stecker / Måle	Femmina / Female Muffe / Femelle	Innestato / Coupled Gekuppelt / Accouplé	(cc)
10	2	06	10	8	450	25	1500	1670	2000	1.4
13	3	08	12.5	10.6	400	43	1300	1400	1460	2.7
20	4	12	20	15.7	400	93	1200	1460	1480	9.3
25	5	16	25	17.3	300	113	1080	1100	1070	16

PERDITA DI CARICO / PRESSURE DROP / DRUCKVERLUST / DEBIT DE PRESSION ( $\Delta p$  bar - l/m)

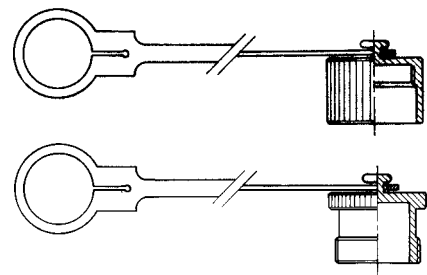
$\Delta p$  (bar)



l/m

ACCESSORI / ACCESSORIES / ZUBEHÖR / ACCESSOIRES

DNP size	Cappuccio per fem. Female dust plug Staubkappe für Muffe Capuchon pour fem.	Tappo per masc. Male dust plug Staubstecker für Stecker Bouchon pour mâle	Colore Colour Farbe Couleur	Materiale Material Werkstoff Matériel
10	SPVV.10002	SPVV.10003	ROSSO / RED	POLIETILENE / POLYETHYLENE
13	SPVV.13002	SPVV.13003	ROSSO / RED	POLIETILENE / POLYETHYLENE
20	SPVV.20002	SPVV.20003	ROSSO / RED	POLIETILENE / POLYETHYLENE
25	SPVV.25002	SPVV.25003	ROSSO / RED	POLIETILENE / POLYETHYLENE



GUARNIZIONI DI RICAMBIO / SPARE PARTS / ERSATZDICHTUNGEN / JOINTS

DNP size	O-RING FEMMINA / FEMALE O-RING MUFFE O-RING / O-RING FEMELLE	DNP size	O-RING ESTERNO FEMMINA / OUTSIDE FEMALE O-RING MUFFE BREMSRING / O-RING FEMELLE EXTERIEUR	DNP size	ANTIESTRUS.FEM / FEM. BACK-UP RING MUFFE STÜTZRING / CONTRE-JOINT FEM.		
10	PVV.010.120 NBR	PVV.010.120 V VITON	10	PVV.013.120 NBR	PVV.013.120 V VITON	10	PVV.010.130 PTFE
13	PVV.013.120	PVV.013.120 V	13	PVV.013.121	PVV.013.121 V	13	PVV.013.130
20	PDV.019.120	PDV.019.120 V	20	PVV.019.121	PVV.019.121 V	20	PVV.019.130
25	PAV.025.120	PAV.025.120 V	25	PVV.025.121	PVV.025.121 V	25	PVV.025.130